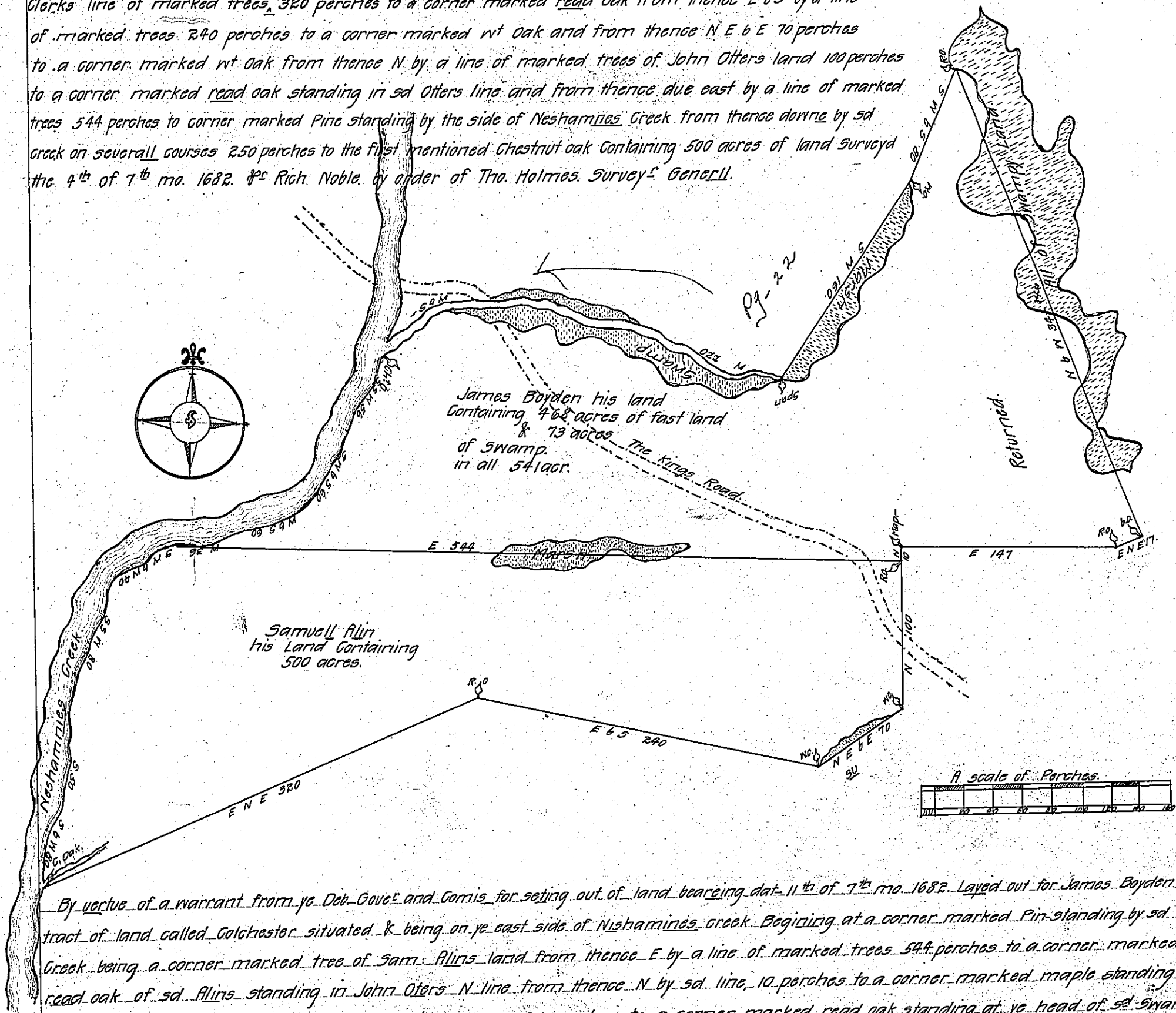


By virtue of a warrant from the Govern^r & Commis^s for setting out of lands bearing date 11th of 7th mo 1682 Layed out for Sam^l Allin a tract of land called — Situated & being on ye east side of Neshamunes Creek.

Beginning at a corner marked Chestnut oak standing by sd Creek at the mouth of a small branch being one of the corner marked trees of the land formerly surveyed for W^m Clerk and thence by sd Clerks line of marked trees 320 perches to a corner marked read oak from thence E 65 by a line of marked trees 240 perches to a corner marked wt oak and from thence N E 6 E 70 perches to a corner marked wt oak from thence N by a line of marked trees of John Olters land 100 perches to a corner marked read oak standing in sd Olters line and from thence due east by a line of marked trees 544 perches to corner marked Pine standing by the side of Neshamunes Creek from thence downe by sd Creek on severall courses 250 perches to the first mentioned Chestnut oak Containring 500 acres of land Surveyed the 4th of 7th mo. 1682. P^r Rich. Noble. by order of Tho. Holmes. Survey^r Generall.



By virtue of a warrant from ye Deb. Gove^r and Commis^s for setting out of land bearing dat^e 11th of 7th mo. 1682. Layed out for James Boyden a tract of land called Colchester situated & being on ye east side of Neshamunes Creek. Beginning at a corner marked Pine standing by sd Creek being a corner marked tree of Sam^l Allins land from thence E by a line of marked trees 544 perches to a corner marked read oak of sd Allins standing in John Olters N line from thence N by sd line 10 perches to a corner marked maple standing by a swamp side from thence east by sd swamp 147 perches to a corner marked read oak standing at ye head of sd Swamp from thence E N E 17 perches to a corner marked black oak standing by an Indian path and from thence N 6 W crossing a greate swamp by a line of marked trees 340 perches to a corner marked read oak standing by sd Swamp from thence SW 69 by a line of marked trees 80 perches to a corner marked wt oak to John Swarts land, from thence SW by a line of marked trees 160 perches to a corner marked Spanish oak standing by a swamp side from thence downe by sd swamp on severall courses 280 perches to ye corner marked Chestnut oak standing by ye side of Neshamunes Creek at the mouth of a small run and from thence downe by sd Creek on severall courses 212 perches to the first mentioned Pine Containring 468 acres of fast land and 73 acres of Swamp in all 541 acres Surveyed the 10th of 7th mo. 1682. P^r R. N. by order of Thom^s Holmes Survey^r Generall.

IN TESTIMONY that the above is a copy of the original remaining on file in the Department of Internal Affairs of Pennsylvania, made conformably to an Act of Assembly approved the 16th day of February, 1833, I have hereunto set my Hand and caused the Seal of said Department to be affixed at Harrisburg, this nineteenth day of November 1910.



Henry Honck
Secretary of Internal Affairs